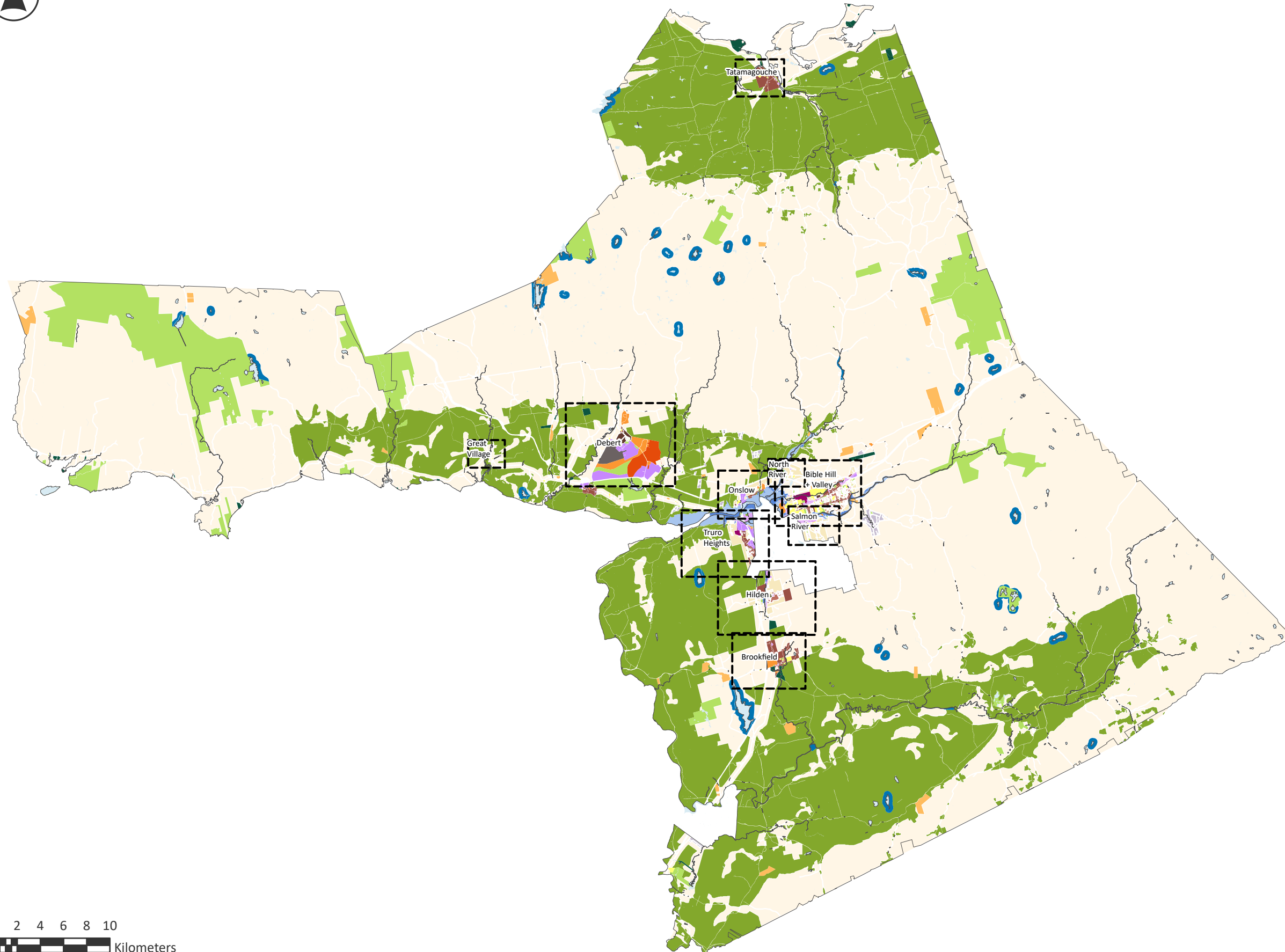





# ZONING MAP

## SCHEDULE A LAND USE BY-LAW



-  AIR Airport
-  AP Agriculture Potential
-  C-1 General Commercial
-  C-2 Highway Commercial
-  C-4 Local Commercial
-  CDD Comprehensive Development District
-  I Institutional
-  M Industrial
-  ML Mi'kmaq Lands
-  MS Main Street
-  P-1 Parks and Open Spaces
-  P-2 Commercial Recreation
-  R-1 Single Dwelling Unit
-  R-2 Double Dwelling Unit
-  R-2C Double Unit Conversion
-  R-3 Medium Density Residential
-  R-4 High Density Residential
-  RG Rural General
-  RM Rural Industrial
-  RR Rural Residential
-  SL Shoreline
-  E-1 Flow Way
-  E-2 Flood Way
-  Water Bodies

0 2 4 6 8 10  
 Kilometers  
 Scale: 1:350,000  
 When Printed at 17" x 11"

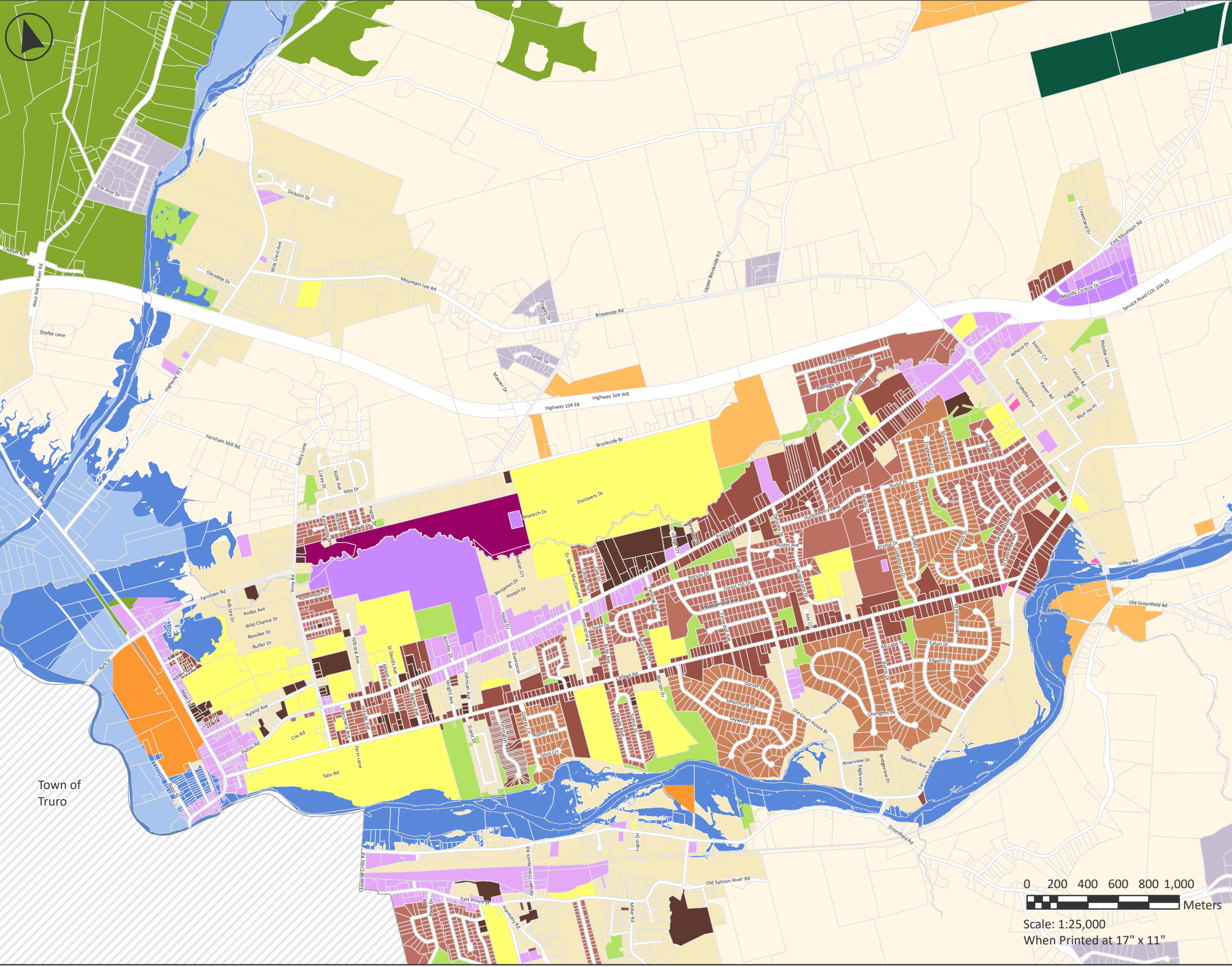


### Notes

Property information provided by  
 Land Information Services of Service Nova Scotia  
 and Municipal Relations.

Maps originally generated with ArcGIS  
 June 5, 2025.

Current Version updated 2026.



# BIBLE HILL + VALLEY ZONING MAP

## SCHEDULE A LAND USE BY-LAW

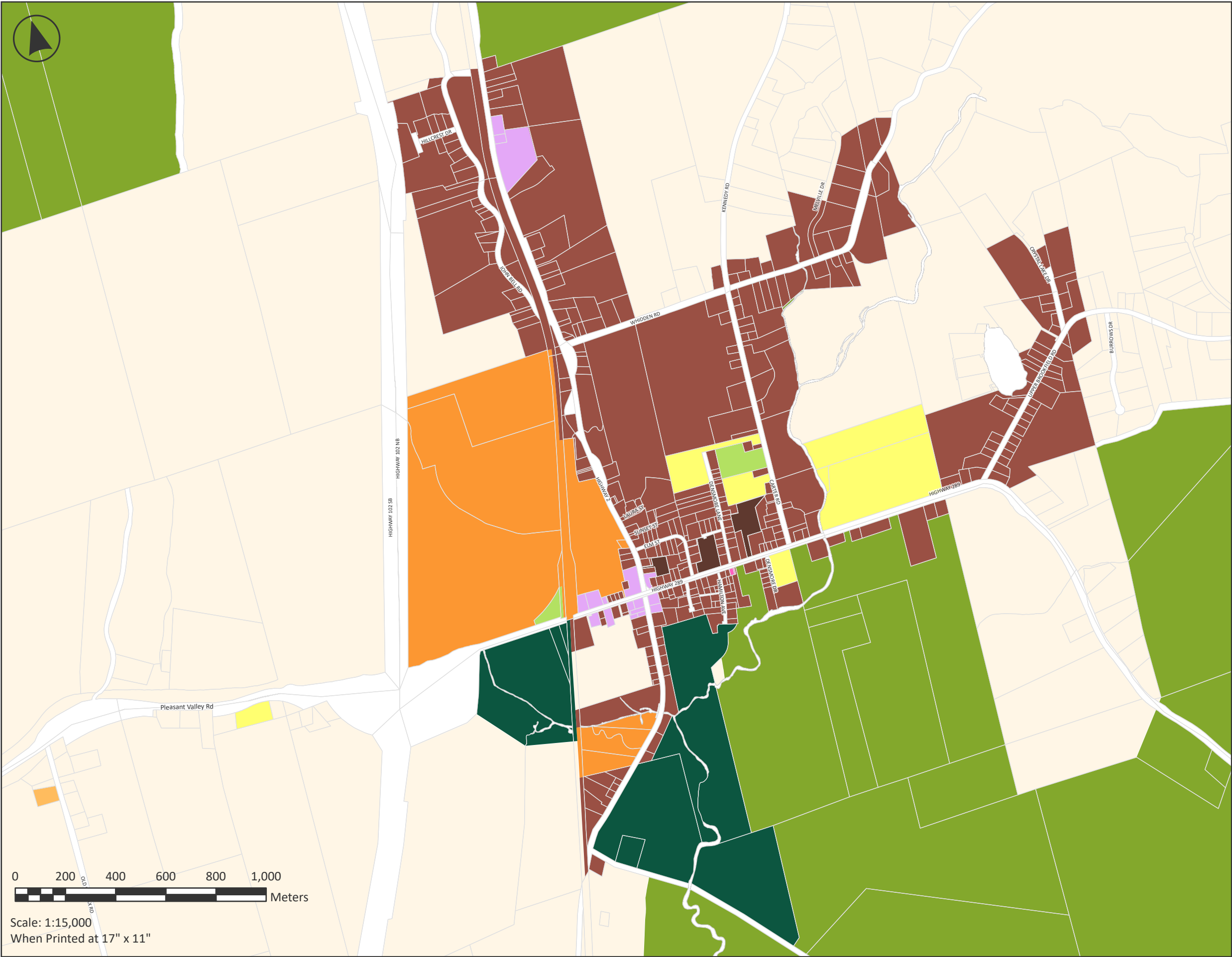
- AIR Airport
- AP Agriculture Potential
- C-1 General Commercial
- C-2 Highway Commercial
- C-4 Local Commercial
- CDD Comprehensive Development District
- I Institutional
- M Industrial
- ML Mi'kmaw Lands
- MS Main Street
- P-1 Parks and Open Spaces
- P-2 Commercial Recreation
- R-1 Single Dwelling Unit
- R-2 Double Dwelling Unit
- R-2C Double Unit Conversion
- R-3 Medium Density Residential
- R-4 High Density Residential
- RG Rural General
- RM Rural Industrial
- RR Rural Residential
- SL Shoreline
- E-1 Flow Way
- E-2 Flood Way

Town of Truro

0 200 400 600 800 1,000  
Meters  
Scale: 1:25,000  
When Printed at 17" x 11"



**Notes**  
 Property information provided by Land Information Services of Service Nova Scotia and Municipal Relations.  
 Maps originally generated with ArcGIS June 5, 2025.  
 Current Version updated 2026.



# BROOKFIELD ZONING MAP

## SCHEDULE A LAND USE BY-LAW

- AIR Airport
- AP Agriculture Potential
- C-1 General Commercial
- C-2 Highway Commercial
- C-4 Local Commercial
- CDD Comprehensive Development District
- I Institutional
- M Industrial
- ML Mi'kmaq Lands
- MS Main Street
- P-1 Parks and Open Spaces
- P-2 Commercial Recreation
- R-1 Single Dwelling Unit
- R-2 Double Dwelling Unit
- R-2C Double Unit Conversion
- R-3 Medium Density Residential
- R-4 High Density Residential
- RG Rural General
- RM Rural Industrial
- RR Rural Residential
- SL Shoreline
- E-1 Flow Way
- E-2 Flood Way

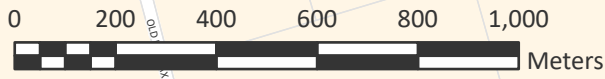


**Notes**

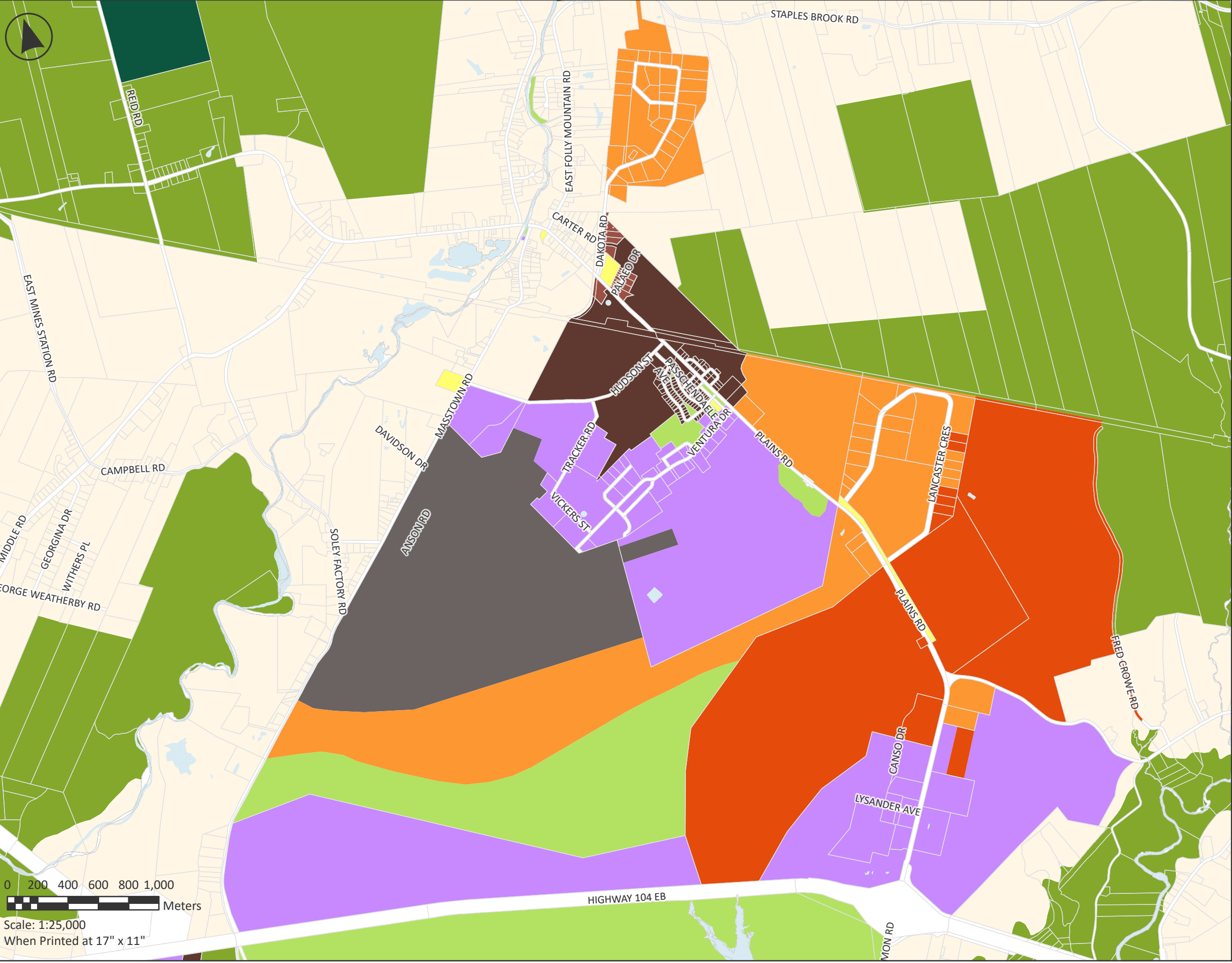
Property information provided by Land Information Services of Service Nova Scotia and Municipal Relations.

Maps originally generated with ArcGIS June 5, 2025.

Current Version updated 2026.



Scale: 1:15,000  
When Printed at 17" x 11"



# DEBERT ZONING MAP

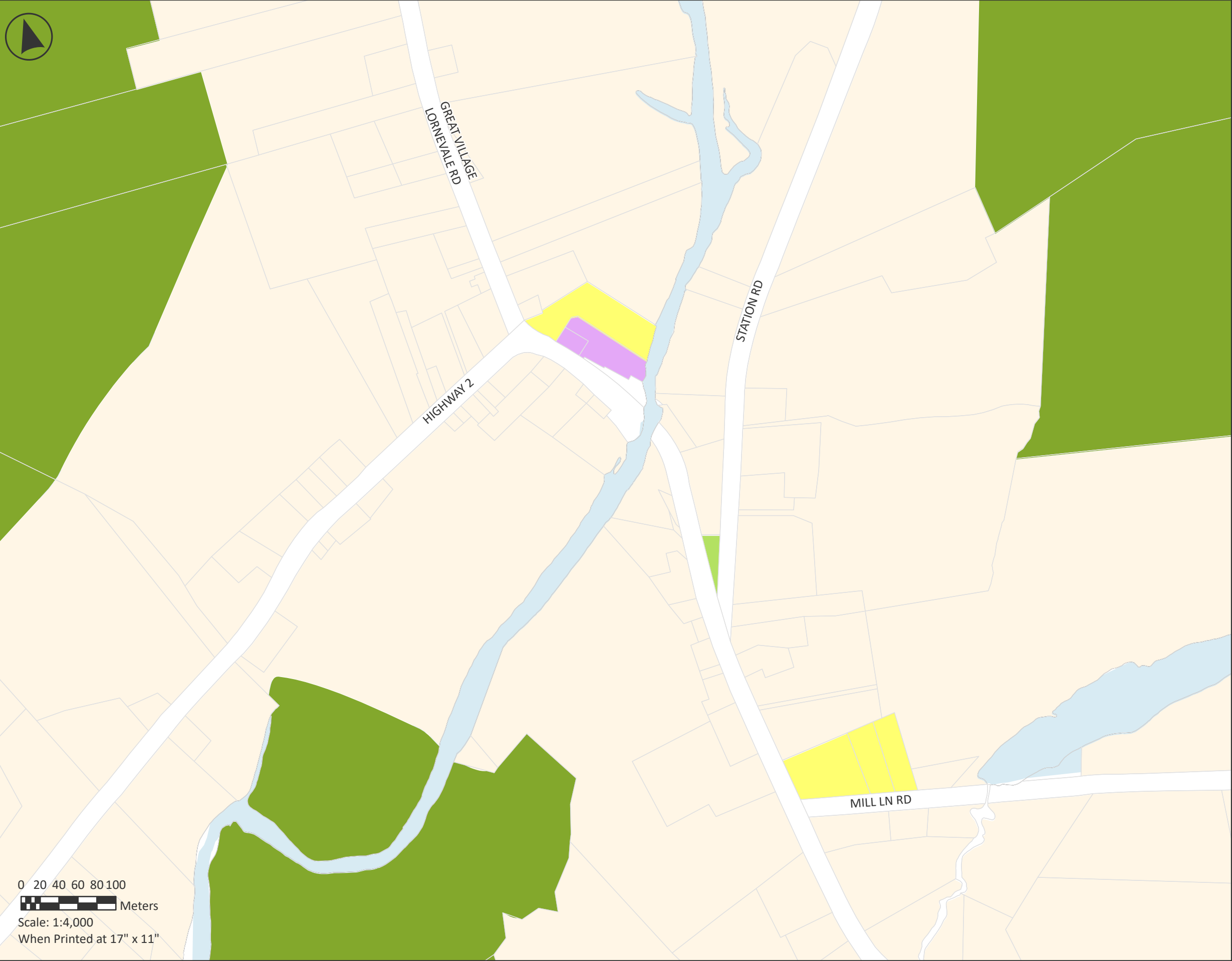
## SCHEDULE A LAND USE BY-LAW

- AIR Airport
- AP Agriculture Potential
- C-1 General Commercial
- C-2 Highway Commercial
- C-4 Local Commercial
- CDD Comprehensive Development District
- I Institutional
- M Industrial
- ML Mi'kmaq Lands
- MS Main Street
- P-1 Parks and Open Spaces
- P-2 Commercial Recreation
- R-1 Single Dwelling Unit
- R-2 Double Dwelling Unit
- R-2C Double Unit Conversion
- R-3 Medium Density Residential
- R-4 High Density Residential
- RG Rural General
- RM Rural Industrial
- RR Rural Residential
- SL Shoreline
- E-1 Flow Way
- E-2 Flood Way
- Water Bodies

0 200 400 600 800 1,000  
 Meters  
 Scale: 1:25,000  
 When Printed at 17" x 11"



**Notes**  
 Property information provided by  
 Land Information Services of Service Nova Scotia  
 and Municipal Relations.  
 Maps originally generated with ArcGIS  
 June 5, 2025.  
 Current Version updated 2026.



# GREAT VILLAGE ZONING MAP

## SCHEDULE A LAND USE BY-LAW

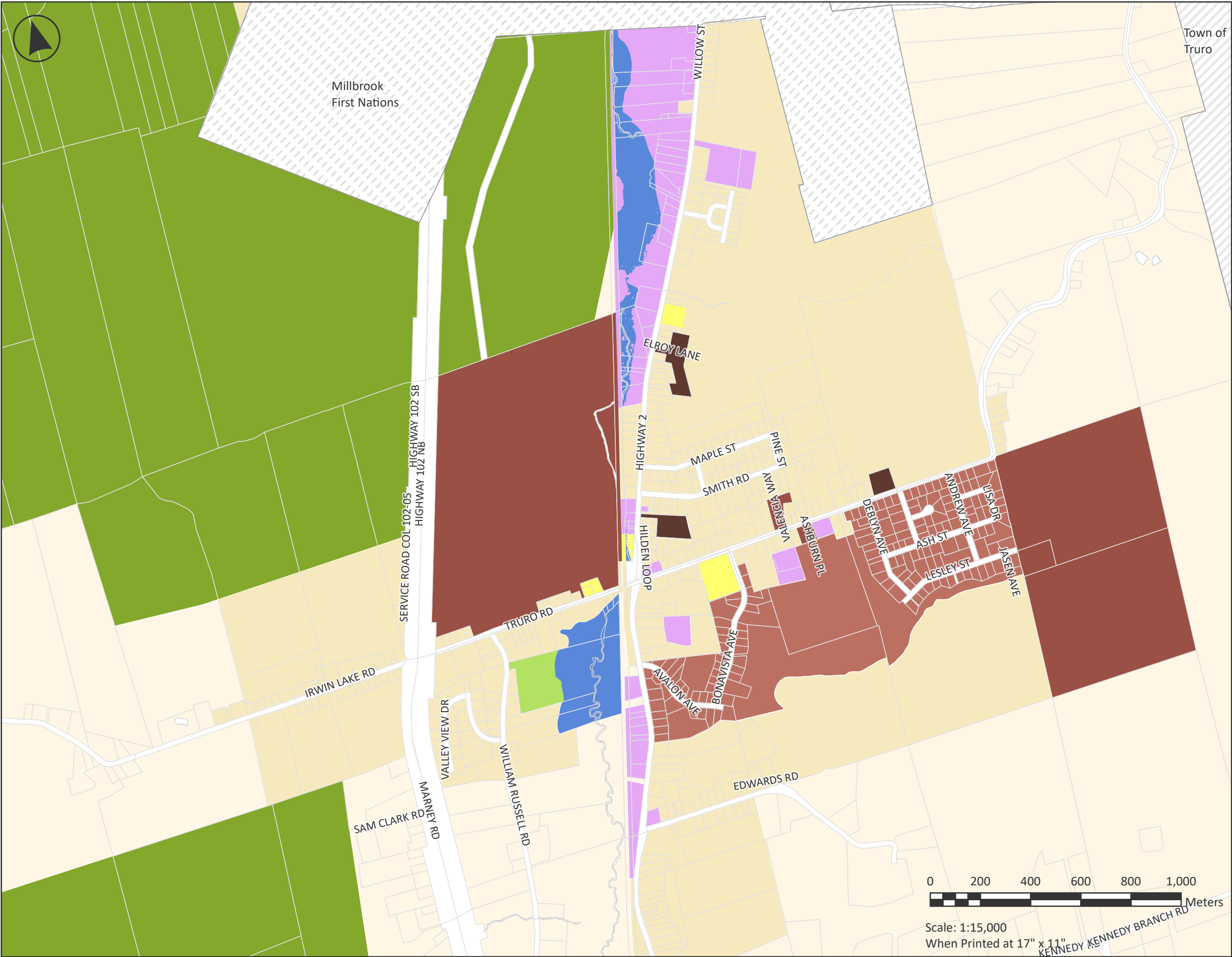
- AIR Airport
- AP Agriculture Potential
- C-1 General Commercial
- C-2 Highway Commercial
- C-4 Local Commercial
- CDD Comprehensive Development District
- I Institutional
- M Industrial
- ML Mi'kmaq Lands
- MS Main Street
- P-1 Parks and Open Spaces
- P-2 Commercial Recreation
- R-1 Single Dwelling Unit
- R-2 Double Dwelling Unit
- R-2C Double Unit Conversion
- R-3 Medium Density Residential
- R-4 High Density Residential
- RG Rural General
- RM Rural Industrial
- RR Rural Residential
- SL Shoreline
- E-1 Flow Way
- E-2 Flood Way
- Water Bodies

0 20 40 60 80 100  
 Meters  
 Scale: 1:4,000  
 When Printed at 17" x 11"



**Notes**  
 Property information provided by  
 Land Information Services of Service Nova Scotia  
 and Municipal Relations.

Maps originally generated with ArcGIS  
 June 5, 2025.  
 Current Version updated 2026.



# HILDEN ZONING MAP

## SCHEDULE A LAND USE BY-LAW

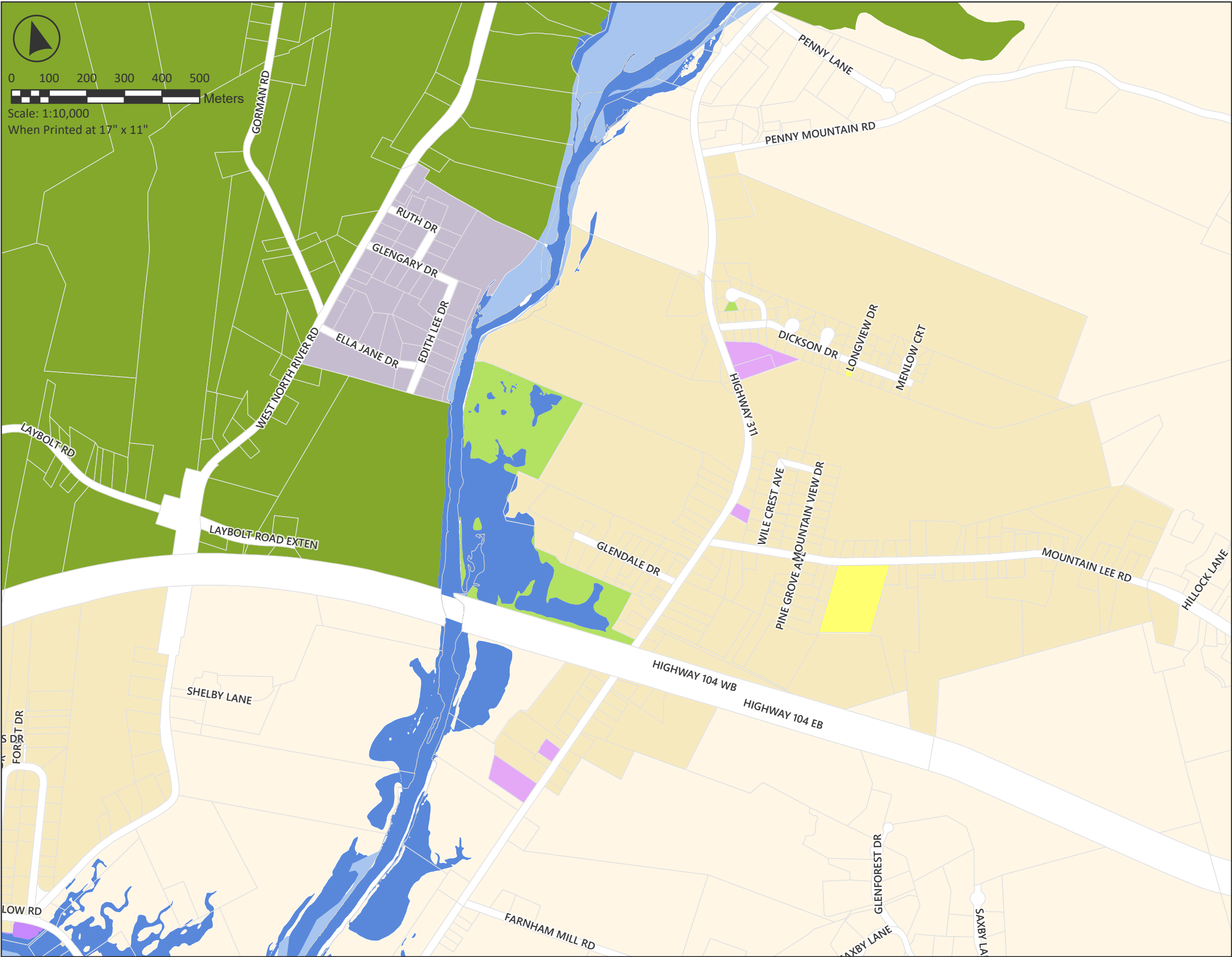
- AIR Airport
- AP Agriculture Potential
- C-1 General Commercial
- C-2 Highway Commercial
- C-4 Local Commercial
- CDD Comprehensive Development District
- I Institutional
- M Industrial
- ML Mi'kmaq Lands
- MS Main Street
- P-1 Parks and Open Spaces
- P-2 Commercial Recreation
- R-1 Single Dwelling Unit
- R-2 Double Dwelling Unit
- R-2C Double Unit Conversion
- R-3 Medium Density Residential
- R-4 High Density Residential
- RG Rural General
- RM Rural Industrial
- RR Rural Residential
- SL Shoreline
- E-1 Flow Way
- E-2 Flood Way



Scale: 1:15,000  
When Printed at 17" x 11"



**Notes**  
Property information provided by Land Information Services of Service Nova Scotia and Municipal Relations.  
Maps originally generated with ArcGIS June 5, 2025.  
Current Version updated 2026.



# NORTH RIVER ZONING MAP

## SCHEDULE A LAND USE BY-LAW

- AIR Airport
- AP Agriculture Potential
- C-1 General Commercial
- C-2 Highway Commercial
- C-4 Local Commercial
- CDD Comprehensive Development District
- I Institutional
- M Industrial
- ML Mi'kmaq Lands
- MS Main Street
- P-1 Parks and Open Spaces
- P-2 Commercial Recreation
- R-1 Single Dwelling Unit
- R-2 Double Dwelling Unit
- R-2C Double Unit Conversion
- R-3 Medium Density Residential
- R-4 High Density Residential
- RG Rural General
- RM Rural Industrial
- RR Rural Residential
- SL Shoreline
- E-1 Flow Way
- E-2 Flood Way



**Notes**

Property information provided by Land Information Services of Service Nova Scotia and Municipal Relations.

Maps originally generated with ArcGIS June 5, 2025.

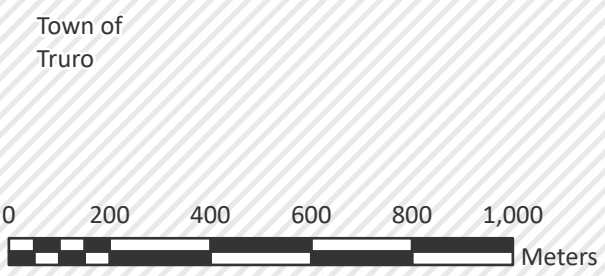
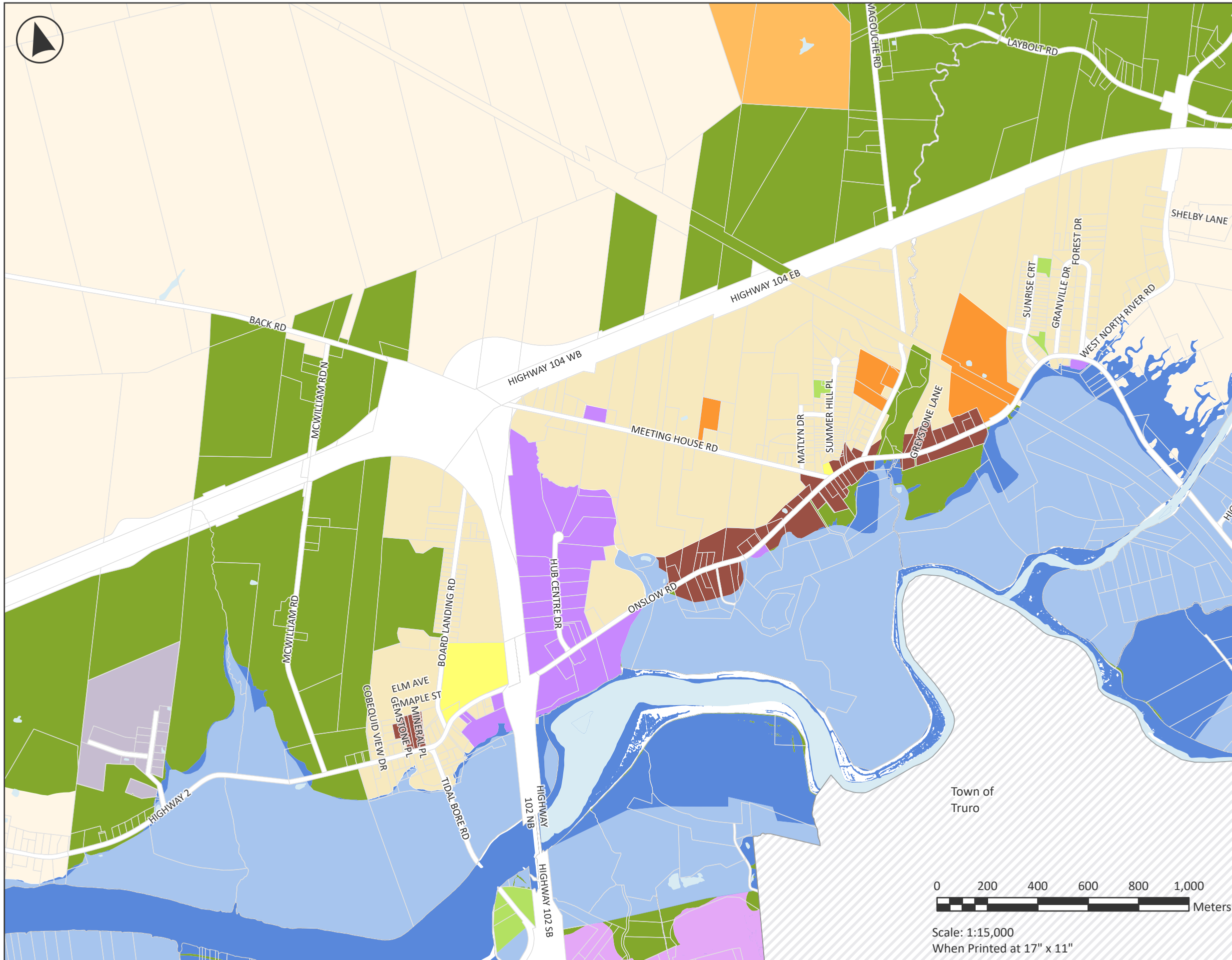
Current Version updated 2026.



# ONSLow ZONING MAP

## SCHEDULE A LAND USE BY-LAW

-  AIR Airport
-  AP Agriculture Potential
-  C-1 General Commercial
-  C-2 Highway Commercial
-  C-4 Local Commercial
-  CDD Comprehensive Development District
-  I Institutional
-  M Industrial
-  ML Mi'kmaq Lands
-  MS Main Street
-  P-1 Parks and Open Spaces
-  P-2 Commercial Recreation
-  R-1 Single Dwelling Unit
-  R-2 Double Dwelling Unit
-  R-2C Double Unit Conversion
-  R-3 Medium Density Residential
-  R-4 High Density Residential
-  RG Rural General
-  RM Rural Industrial
-  RR Rural Residential
-  SL Shoreline
-  E-1 Flow Way
-  E-2 Flood Way
-  Water Bodies



Scale: 1:15,000  
When Printed at 17" x 11"



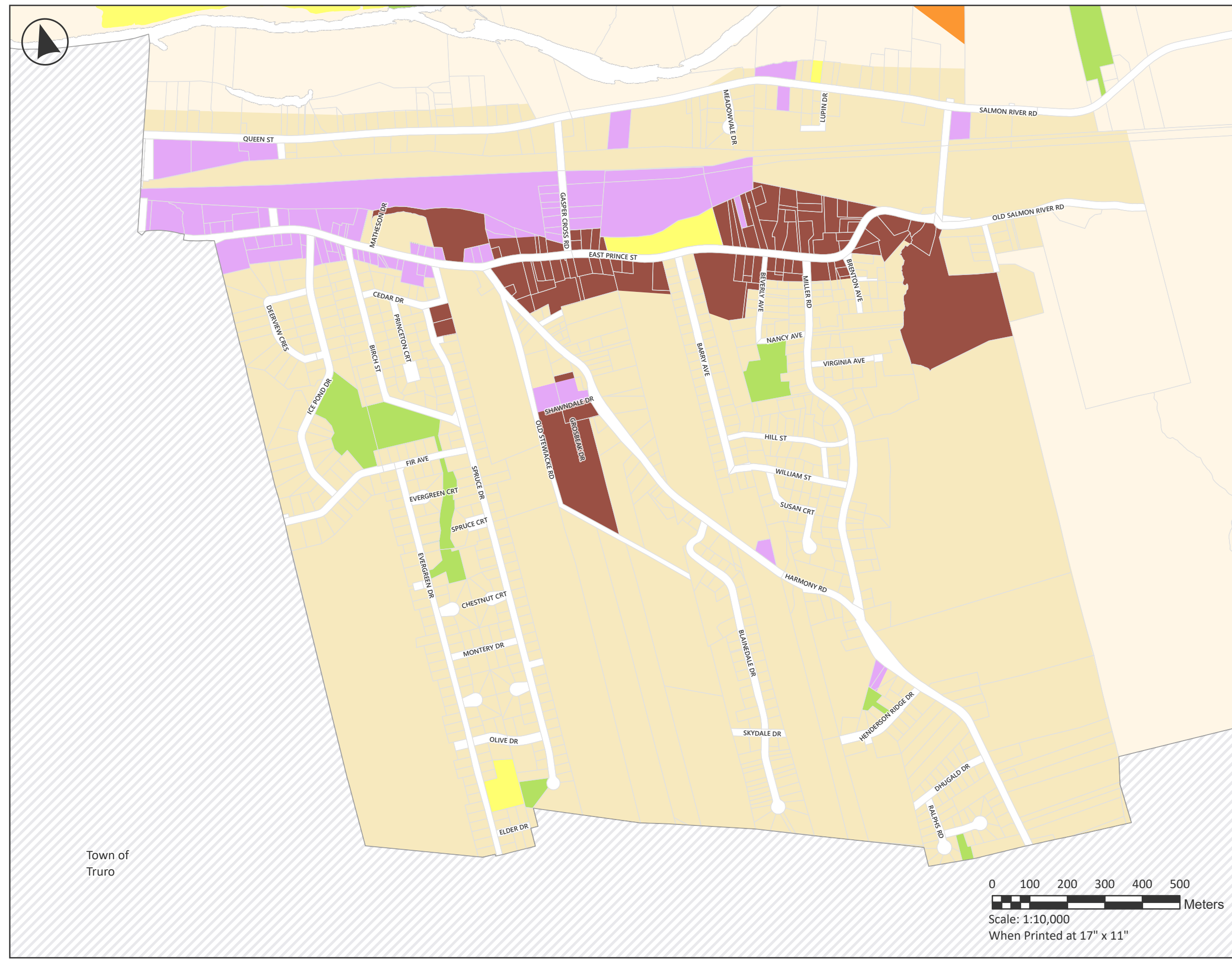
**Notes**  
Property information provided by  
Land Information Services of Service Nova Scotia  
and Municipal Relations.  
Maps originally generated with ArcGIS  
June 5, 2025.  
Current Version updated 2026.




# SALMON RIVER ZONING MAP

## SCHEDULE A LAND USE BY-LAW

-  AIR Airport
-  AP Agriculture Potential
-  C-1 General Commercial
-  C-2 Highway Commercial
-  C-4 Local Commercial
-  CDD Comprehensive Development District
-  I Institutional
-  M Industrial
-  ML Mi'kmaq Lands
-  MS Main Street
-  P-1 Parks and Open Spaces
-  P-2 Commercial Recreation
-  R-1 Single Dwelling Unit
-  R-2 Double Dwelling Unit
-  R-2C Double Unit Conversion
-  R-3 Medium Density Residential
-  R-4 High Density Residential
-  RG Rural General
-  RM Rural Industrial
-  RR Rural Residential
-  SL Shoreline
-  E-1 Flow Way
-  E-2 Flood Way

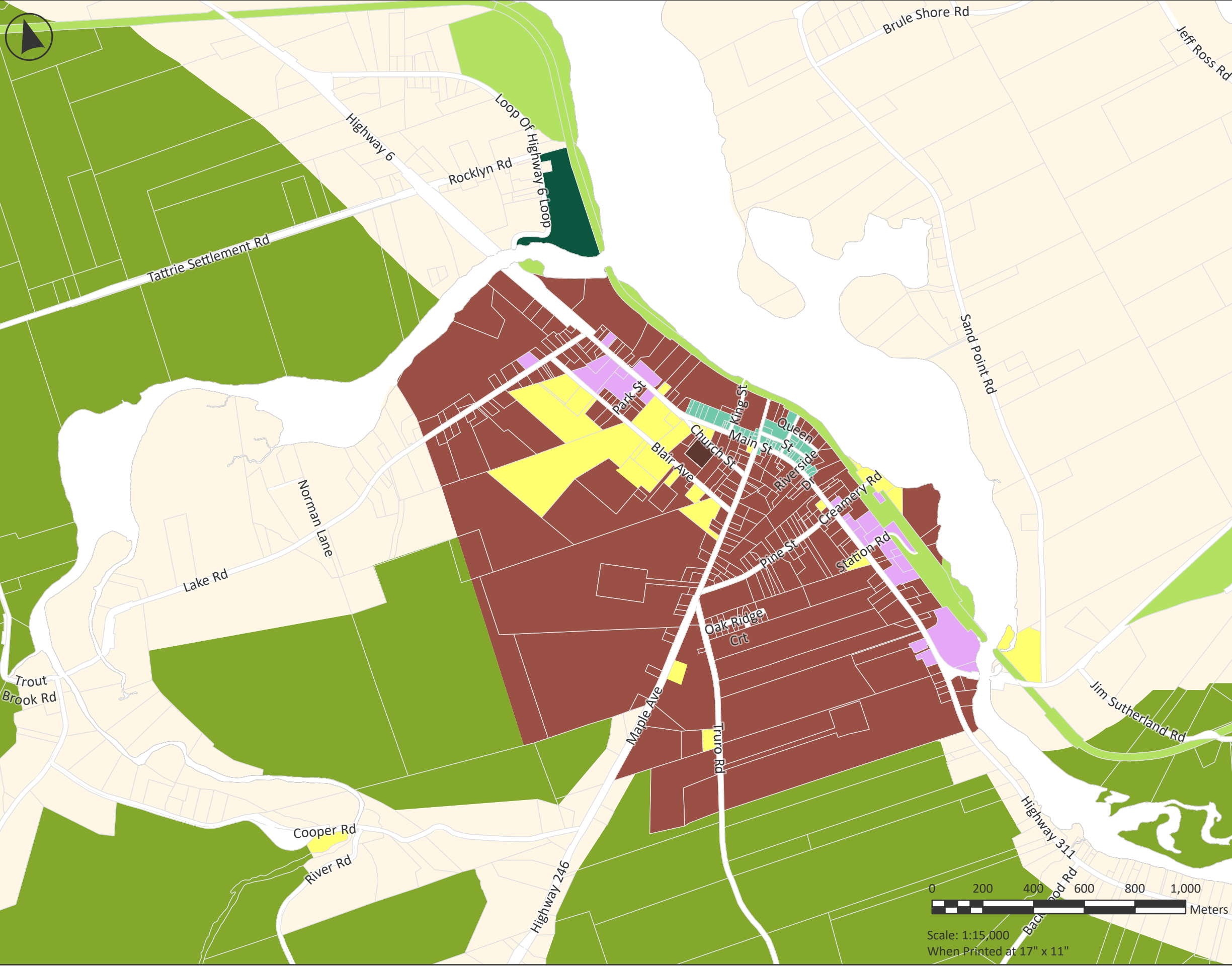


Town of Truro

0 100 200 300 400 500  
 Meters  
 Scale: 1:10,000  
 When Printed at 17" x 11"



**Notes**  
 Property information provided by  
 Land Information Services of Service Nova Scotia  
 and Municipal Relations.  
 Maps originally generated with ArcGIS  
 June 5, 2025.  
 Current Version updated 2026.



# TATAMAGOUCHE ZONING MAP

## SCHEDULE A LAND USE BY-LAW

- AIR Airport
- AP Agriculture Potential
- C-1 General Commercial
- C-2 Highway Commercial
- C-4 Local Commercial
- CDD Comprehensive Development District
- I Institutional
- M Industrial
- ML Mi'kmaq Lands
- MS Main Street
- P-1 Parks and Open Spaces
- P-2 Commercial Recreation
- R-1 Single Dwelling Unit
- R-2 Double Dwelling Unit
- R-2C Double Unit Conversion
- R-3 Medium Density Residential
- R-4 High Density Residential
- RG Rural General
- RM Rural Industrial
- RR Rural Residential
- SL Shoreline
- E-1 Flow Way
- E-2 Flood Way














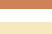






Scale: 1:15,000  
When Printed at 17" x 11"

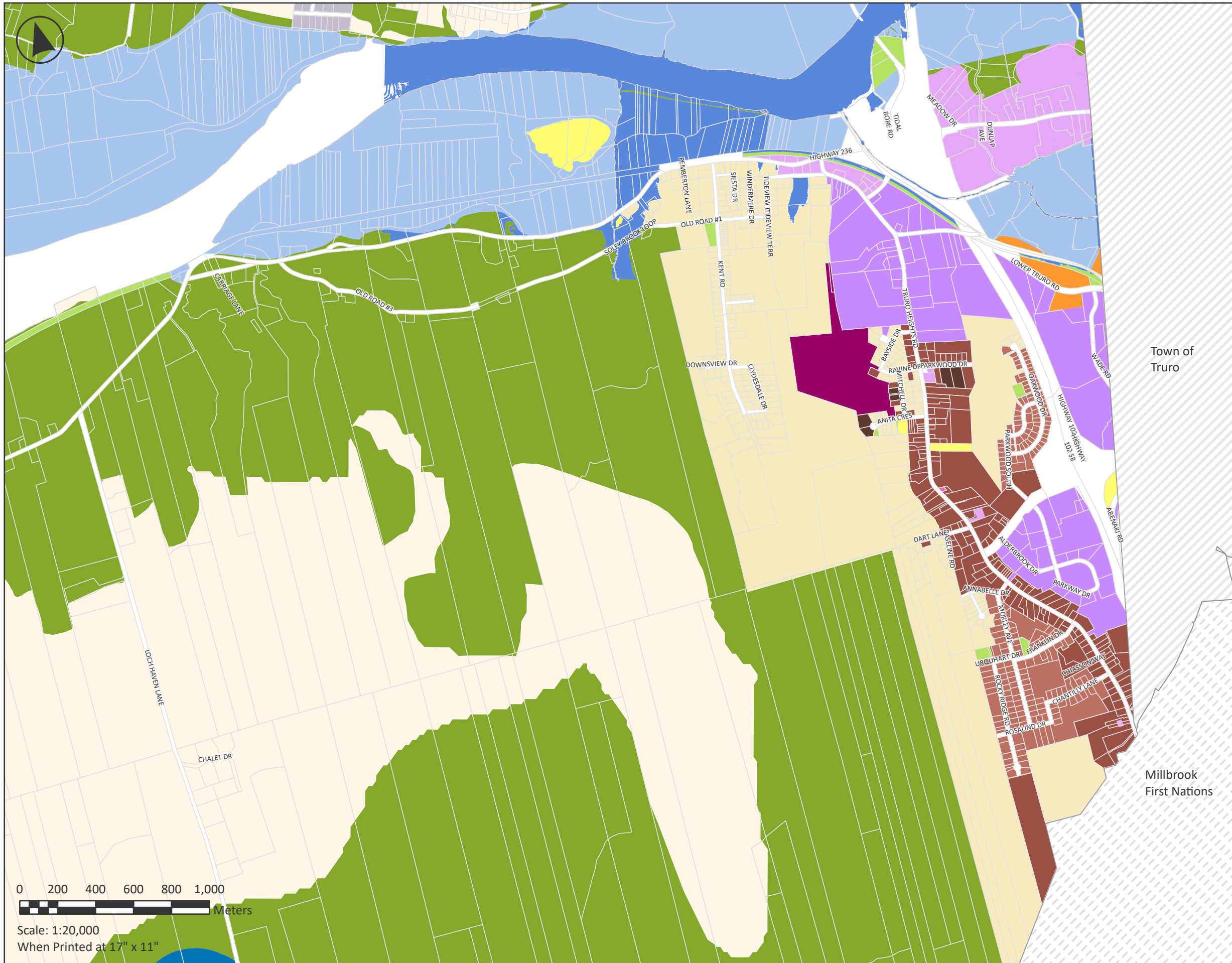


**Notes**  
 Property information provided by Land Information Services of Service Nova Scotia and Municipal Relations.  
 Maps originally generated with ArcGIS June 5, 2025.  
 Current Version updated 2026.

# TRURO HEIGHTS ZONING MAP

## SCHEDULE A LAND USE BY-LAW

-  AIR Airport
-  AP Agriculture Potential
-  C-1 General Commercial
-  C-2 Highway Commercial
-  C-4 Local Commercial
-  CDD Comprehensive Development District
-  I Institutional
-  M Industrial
-  ML Mi'kmaq Lands
-  MS Main Street
-  P-1 Parks and Open Spaces
-  P-2 Commercial Recreation
-  R-1 Single Dwelling Unit
-  R-2 Double Dwelling Unit
-  R-2C Double Unit Conversion
-  R-3 Medium Density Residential
-  R-4 High Density Residential
-  RG Rural General
-  RM Rural Industrial
-  RR Rural Residential
-  SL Shoreline
-  E-1 Flow Way
-  E-2 Flood Way



0 200 400 600 800 1,000  
Meters

Scale: 1:20,000  
When Printed at 17" x 11"



### Notes

Property information provided by Land Information Services of Service Nova Scotia and Municipal Relations.

Maps originally generated with ArcGIS June 5, 2025.

Current Version updated 2026.